

GREEN STAR SPORT

GREEN LINE per lo sport

Green Star Sport è ideale per la realizzazione di nuovi impianti sportivi. Questa miscela di *Lolium perenne* e *Poa pratensis* si insedia rapidamente dando un manto erboso denso e resistente grazie alla forte crescita delle radici nelle prime fasi dello sviluppo del manto erboso.



CARATTERISTICHE

- Produce un manto erboso fine e denso
- Tollerante al taglio basso
- Elevata resistenza alle malattie
- Ottima tolleranza all'usura
- Colore brillante tutto l'anno

Dose di semina

30 gr/mq

Altezza taglio

2/4 cm

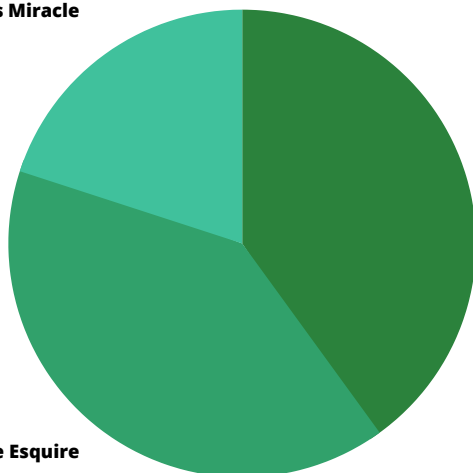
Periodo

da febbraio a novembre

Poa Pratensis Miracle
20%

Lolium Perenne Esquire
40%

Lolium Perenne Dickens
40%



Sacco

Kg. 10

Comagricola Green Europe S.R.L.

Via Ing. G. Caproni - 24036 Ponte San Pietro (BG) - Italia - Tel: +39 035 621747 - Fax: +39 035 621947 - www.comagricola.it - info@comagricola.it
Capitale Sociale € 10.400,00 i.v. - C.F. e P.IVA: IT00662680164 - Reg. Imp. BG 00662680164 R.E.A. BG n. 162151

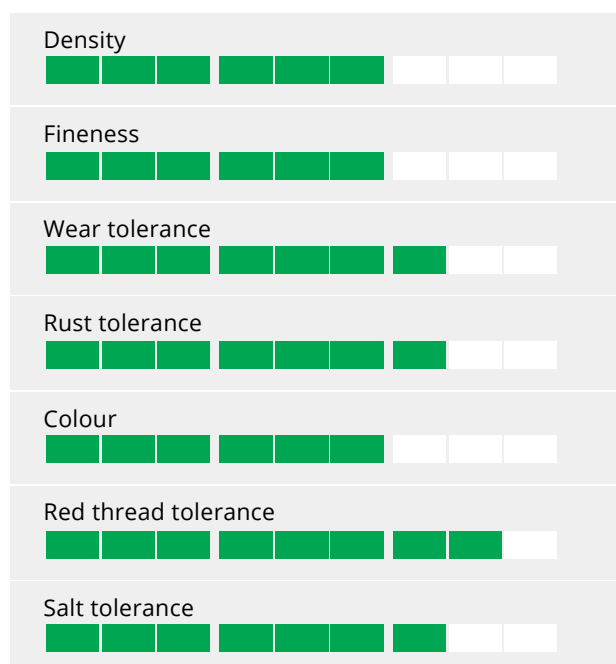


Kentucky bluegrass

Superb rust resistance and attractive dark green colour

- Perfect for tall fescue mixtures
- High wear tolerance
- Darker green colour
- Medium-large leaves and density

Ratings



Excellent mixture component

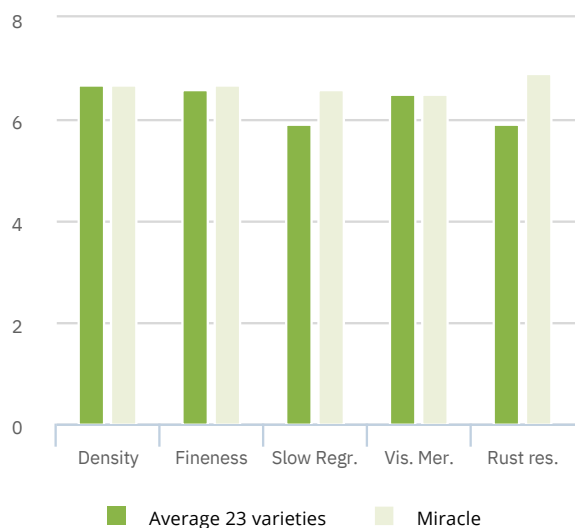
MIRACLE has medium density and the leaves are quite large. This fits very well with many tall fescues and the rather dark leaf colour allows to pick out perfect partners for mixtures in warmer regions. The rather aggressive growth allows also to compete in mixtures with perennial ryegrass.

Very high rust resistance

The high resistance to rusts is very appreciable in *Poa pratensis*. As the species has apomictic behaviour in seed production means that all plants in a variety are almost identical from a genetical point of view and will all show symptoms in case of lack of resistance.

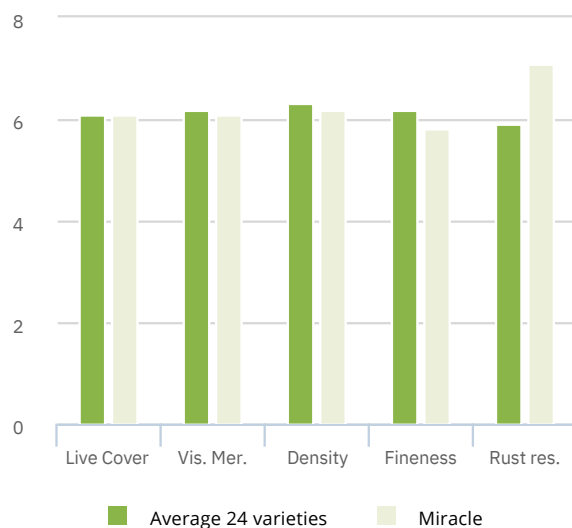
Performance for Lawn Use

Source: STRI Table L2 2008 (Lawn Use)



Performance for Sport Use

Source: STRI Table S2 2008 (Sport Use)





Perennial ryegrass
Very fine leaved with high shoot density

- Very high shoot density
- Very fine leave texture
- Very high density
- Top quality

Ratings



Top variety of the DLF portfolio

Due to the use and mixture partners the demand to the leaf size may be different.

DICKENS 1 has a very fine needle type leaf texture and in combination with the high shoot density it's the major reason to the harmonic and dense appearance of DICKENS 1.

The very good rating for amenity turf and wear tolerance of the RSM rating speak for themselves and show the superb quality of this variety. If you talk quality turf you can not avoid using DICKENS 1!

RSM rating Dickens 1

Source: FLL (Scores 1-9, 9= best)

	Front lawn	Back lawn	Sports field	Landscape
Dickens 1	7	9	9	6
Jessica	6	7	8	6

Rating STRI Sport

source: STRI (Scores 1-9, 9= best)

Performance for Sport and Lawn			
Sport	Visual merit	Fineness of leaf	Mean
Dickens 1	7,1	8	7,1
Lawn	Visual merit	Shoot density	Mean
Dickens 1	8,	9	7,
Jessica	9	7,7	2
	7,		7
	3		



Perennial ryegrass Convincing by Performance!

- Dark green colour
- Multi-resistant
- Very fast in establishment
- Combining density and wear tolerance

Ratings



Brilliant Future

ESQUIRE is one of the few varieties needing hardly any promotion. Since we started dispatching of seed for private trials we have had a very high positive feedback. Esquire's "field" performance is highly convincing!

Multi-Resistant

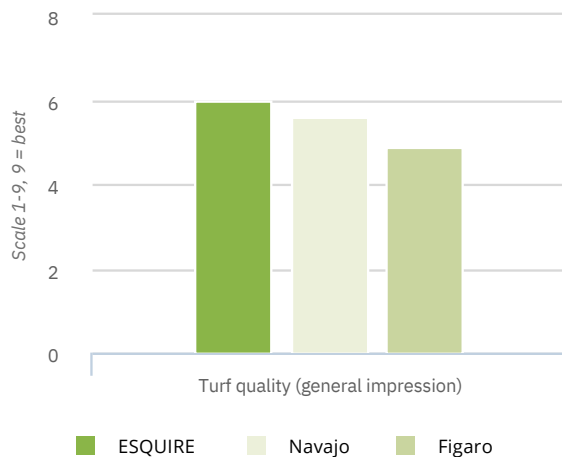
ESQUIRE resists well to winter damage and is tolerant to the majority of diseases of importance in the European Union and in North America; rusts, leaf spot, red thread and dollar spot.

First Out of Starting-Blocs

ESQUIRE takes off very early in spring with an impressive density. This explains also a very good wear tolerance. This is combined with good summer appearance and leaf fineness above average.

Turf quality

Source: NTEP USA



Spring greenup

Source: NTEP USA

